

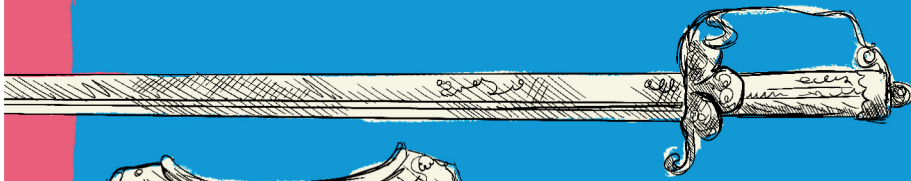


Object Trail

At The National Civil War Centre

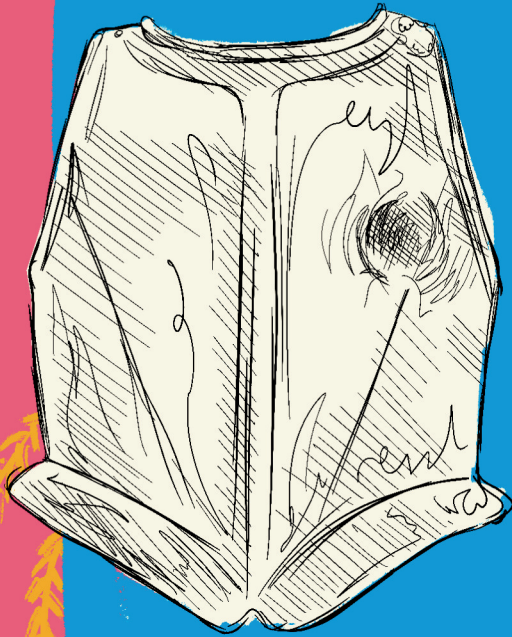
English version

Newark in the 1600s



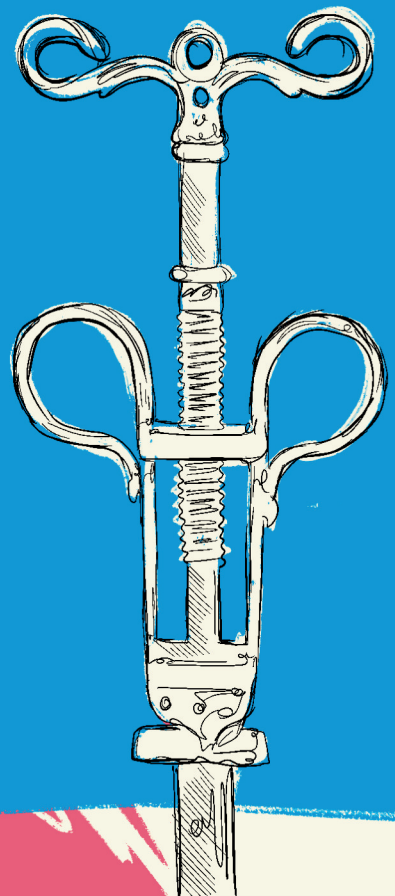
Bullet Extractor

If you survived a bullet wound on the battlefield, you may run the risk of infection. This useful tool was used to locate and remove bullets from inside the body.



Sword and Breastplate

Owning high quality weapons and armour was vital to surviving the Civil Wars. This sword bears the mark of Andrea Ferrara, a highly renowned sword maker. The dent in the breastplate was created deliberately by the armourer to show it would be effective in battle.



Posey Ring

The inscription on the gold and enamel ring suggests an alliance between the opposing armies of the war.



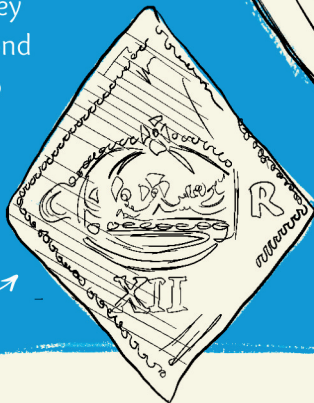
Bellarmino Jug

In the 1600s, people believed that they needed to protect their homes from witchcraft. They'd fill containers like this one with urine, toenails and hair to defend themselves from harm or misfortune.



Siege Piece

Siege pieces were minted in Newark during the final siege of Newark. They were cut into diamond shapes to ensure no metal was wasted during the cutting process.



General Local History



Sherwood Foresters Drum

This drum was presented to the Sherwood Foresters on the battalions' return from WWI.

Cheek Piece

This was originally a part of a Roman cavalry helmet. The intricate design depicts Roman Gods, offering good fortune to the wearer in battle.

Torc

This ornamental neckpiece was worn by a chief during the Iron Age. It is made of a mixture of gold, silver and copper.



Parachute Bike

These bikes could be folded and carried by soldiers as they parachuted behind enemy lines during WWII. There was also an option to throw these bikes out of an aircraft after attaching them to their own, smaller parachute.

Illustrated and designed by
Samantha Jayne Peberdy



Funded by
UK Government



Supported using public funding by
ARTS COUNCIL
ENGLAND

**OPEN
DOORS**

**NATIONAL
CIVIL WAR
CENTRE**
NEWARK MUSEUM



**NEWARK &
SHERWOOD
DISTRICT COUNCIL**